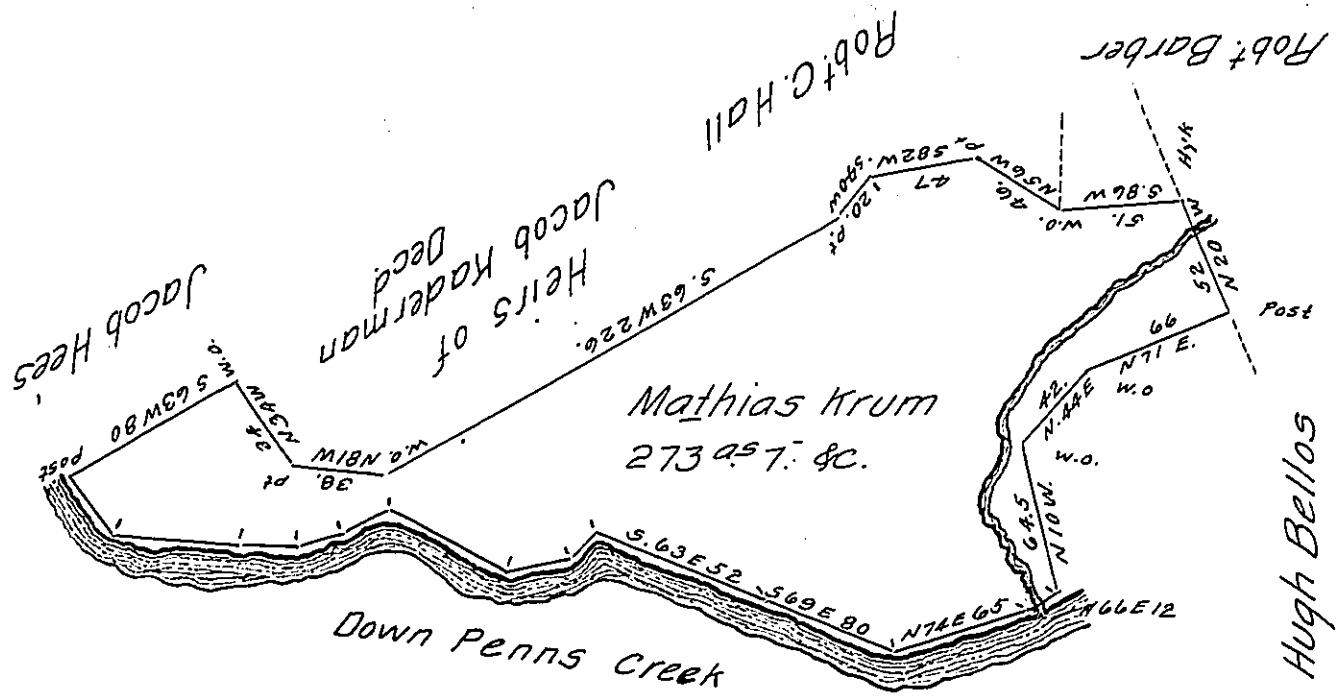


FORM NO 1.



Cor. & Dist.  
 Down Creek.  
 S. 36 E 30  
 S. 82 E 52  
 EAST 26  
 N. 80 E 20  
 N. 65 E 20  
 S. 60 E 56  
 N. 80 E 30  
 N. 41 E 15  
 S. 63 E 52  
 S. 69 E 80  
 N. 74 E 65  
 N. 66 E 12  
 458 P.

Situate in West Buffalo township Union (late Berks) County. Surveyed the 2<sup>d</sup> day of September 1833 by virtue of an order granted to Mathias Krum dated the 3<sup>d</sup> day of April 1769. N<sup>o</sup> 2478. Containing two hundred & seventy three Acres & seven tenths with the usual allowance of Six  $\frac{1}{2}$  Cent & c.

Note. The same tract of land was Surveyed the 23<sup>d</sup> day of February 1769. for John Harris in pursuance of his Warrant dated the 7<sup>th</sup> day of February 1755. And now owned & Occupied by John Sheibly & Christian Sheibly in right of the Said John Harris.

To Jacob Spangler Esq. }  
 Surveyor General Penn<sup>a</sup> } P<sup>r</sup>. Jn<sup>o</sup> Hayes, Con.

John Harris. Pat.

IN TESTIMONY that the above is a copy of the original remaining on file in the Department of Internal Affairs of Pennsylvania, made conformably to an Act of Assembly approved the 16th day of February, 1833, I have hereunto set my Hand and caused the Seal of said Department to be affixed at Harrisburg, this eleventh day of January 1909.

Henry Houck

Secretary of Internal Affairs.